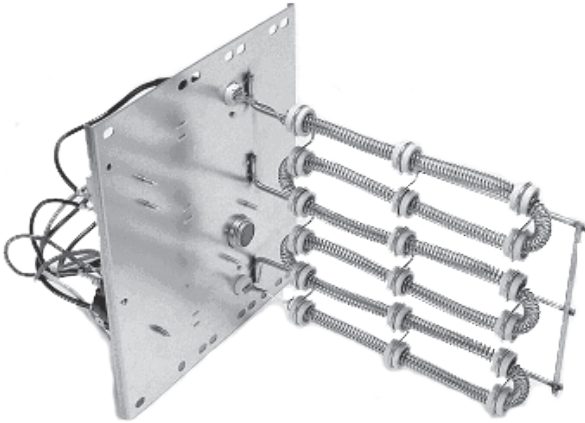




Air Conditioning & Heating

# HKR SERIES

## ELECTRIC HEAT KITS FOR AIR HANDLERS AND PACKAGED ELECTRIC UNITS



### Standard Features

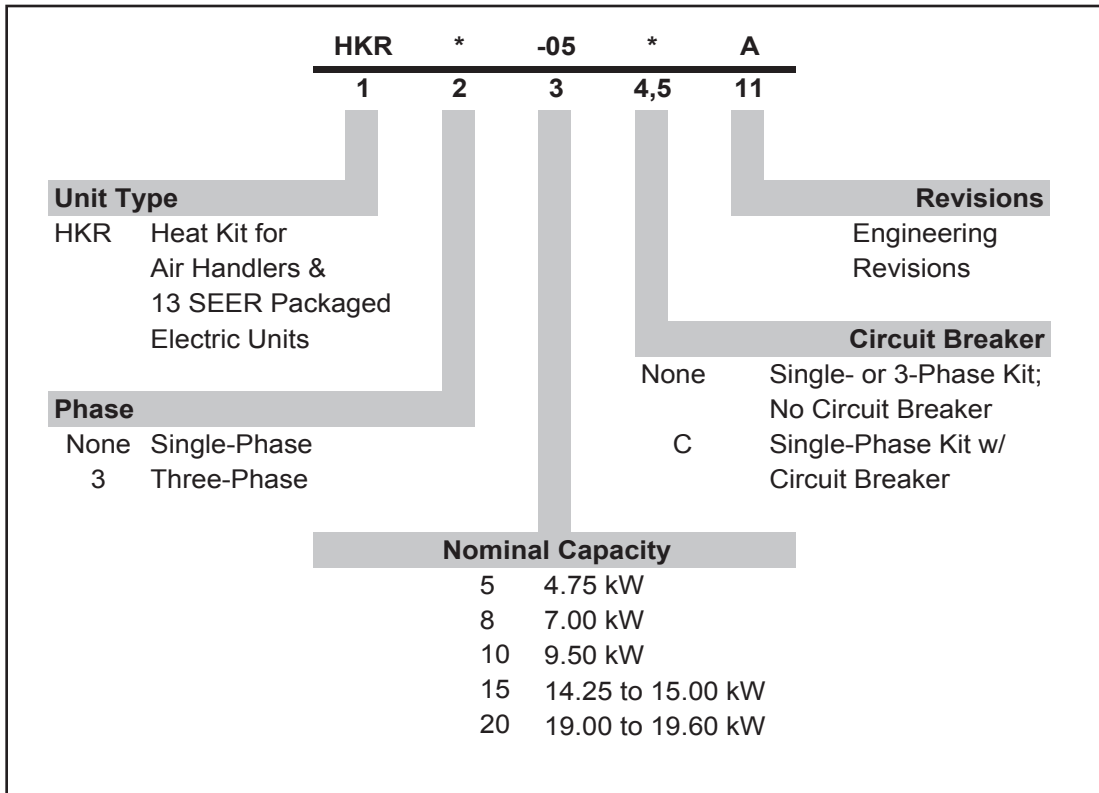
- Sequencers for better temperature control
- Multiple branch circuit capability
- Completely assembled and tested
- Built-in overcurrent protection on all units (as indicated in the Electrical Data)
- Control circuitry arranged to readily permit staging
- Factory-installed circuit breakers available on specific models (See Electrical Data)
- Fuse link secondary high-temperature limit control
- Plug-in wiring harness for ease on installation into air handler
- Rust-resistant nickel chromium heat elements
- ETL Listed



\* Complete warranty details available from your local dealer or at [www.goodmanmfg.com](http://www.goodmanmfg.com).



# NOMENCLATURE



## HEATING kW CORRECTION FACTOR

SUPPLY VOLTAGE	240	230	220	210	208
CORRECTION FACTOR	1.00	0.93	0.85	0.78	0.76

Multiply the 240 volt ampacity by factors

## AIR HANDLER ELECTRICAL DATA

MODEL & HEAT KIT USAGE	CIRCUIT 1			CIRCUIT 2		
	HEATER AMPS	MCA <sup>1</sup>	MOP <sup>2</sup>	HEATER AMPS	MCA <sup>1</sup>	MOP <sup>2</sup>
<b>AEPF183016A*</b>	<b>0 / 0</b>	<b>2.5 / 2.5</b>	<b>15 / 15</b>	---	--	--
HKR-05*, HKR-05C*	17.1 / 19.8	24 / 27	30 / 30	---	--	--
HKR-08*, HKR-08C*	25.3 / 29.2	34 / 39	40 / 40	---	--	--
HKR-10*, HKR-10C*	34.3 / 39.6	45 / 52	60 / 60	---	--	--
<b>AEPF303616A*</b>	<b>0 / 0</b>	<b>3.1 / 3.1</b>	<b>15 / 15</b>	---	--	--
HKR-08*, HKR-08C*	25.3 / 29.2	35 / 40	40 / 40	---	--	--
HKR-10*, HKR-10C*	34.3 / 39.6	46 / 53	60 / 60	---	--	--
HKR-15C*	34.3 / 39.6	46 / 53	60 / 60	17.2 / 19.8	22/25	30 / 30
<b>AEPF426016A*</b>	<b>0 / 0</b>	<b>7.8 / 7.8</b>	<b>15 / 15</b>	---	--	--
HKR-10*, HKR-10C*	34.3 / 39.6	51 / 57	60 / 60	---	--	--
HKR-15C*	34.3 / 39.6	51 / 57	60 / 60	17.2 / 19.8	21/25	30 / 30
HKR-20C*	34.3 / 39.6	51 / 57	60 / 60	34.3 / 39.6	43/50	60 / 60
HKR-21C*	37.9 / 43.8	54 / 60	60 / 60	37.9 / 43.8	48/55	60 / 60
<b>AEPF183016B*</b>	<b>0 / 0</b>	<b>2.5 / 2.5</b>	<b>15 / 15</b>	---	---	---
HKR-03*	10.8 / 12.5	16 / 18.1	20 / 20	---	---	---
HKR-05* / 05C*	17.1 / 19.8	24 / 27	30 / 30	---	---	---
HKR-06*	21.6 / 25.0	30 / 34	40 / 40	---	---	---
HKR-08* / -08C*	25.3 / 29.2	34 / 39	40 / 40	---	---	---
HKR-10* / -10C*	34.3 / 39.6	45 / 52	60 / 60	---	---	---
<b>AEPF303616B*</b>	<b>0 / 0</b>	<b>3.1 / 3.1</b>	<b>15 / 15</b>	---	---	---
HKR-03*	10.8 / 12.5	17 / 19	20 / 20	---	---	---
HKR-05* / 05C*	17.1 / 19.8	24 / 28	30 / 30	---	---	---
HKR-06*	21.6 / 25.0	30 / 34	40 / 40	---	---	---
HKR-08* / -08C*	25.3 / 29.2	35 / 40	40 / 40	---	---	---
HKR-10* / -10C*	34.3 / 39.6	46 / 53	60 / 60	---	---	---
HKR-15C*	34.3 / 39.6	46 / 53	60 / 60	17.2 / 19.8	22 / 25	30 / 30
<b>AEPF426016B*</b>	<b>0 / 0</b>	<b>7.8 / 7.8</b>	<b>15 / 15</b>	---	---	---
HKR-03*	10.8 / 12.5	21 / 24	30 / 30	---	---	---
HKR-05* / 05C*	17.1 / 19.8	29 / 33	40 / 40	---	---	---
HKR-06*	21.6 / 25.0	34.8 / 39	40 / 40	---	---	---
HKR-08* / -08C*	25.3 / 29.2	39 / 44	60 / 60	---	---	---
HKR-10* / -10C*	34.3 / 39.6	51 / 57	60 / 60	---	---	---
HKR-15C*	34.3 / 39.6	51 / 57	60 / 60	17.2 / 19.8	22 / 25	30 / 30
HKR-20C*	34.3 / 39.6	51 / 57	60 / 60	34.3 / 39.6	43 / 50	60 / 60
HKR-21C*	37.9 / 43.8	54 / 60	60 / 60	37.9 / 43.8	48 / 55	60 / 60

See Notes on Page 5.

## AIR HANDLER ELECTRICAL DATA (CONT.)

MODEL & HEAT KIT USAGE	CIRCUIT 1			CIRCUIT 2		
	HEATER AMPS	MCA <sup>1</sup>	MOP <sup>2</sup>	HEATER AMPS	MCA <sup>1</sup>	MOP <sup>2</sup>
<b>ASPF183016B*</b>	<b>0 / 0</b>	<b>3.1 / 3.1</b>	<b>15 / 15</b>	---	---	---
HKR-03*	10.8 / 12.5	17 / 19	20 / 20	---	---	---
HKR-05* / -05C*	17.1 / 19.8	27 / 30	30 / 30	---	---	---
HKR-06*	21.6 / 25.0	32 / 37	40 / 40	---	---	---
HKR-08* / -08C*	25.3 / 29.2	37 / 39	40 / 40	---	---	---
HKR-10* / -10C*	34.3 / 39.6	48 / 55	60 / 60	---	---	---
HKR-15C*	34.3 / 39.6	46 / 53	60 / 60	17.2 / 19.8	21 / 25	30 / 30
^HKR3-15*	0 / 0	3.1 / 3.1	15 / 15	31.2 / 36.1	39 / 45	60 / 60
<b>ASPF183016D*</b>	<b>0 / 0</b>	<b>3.6 / 3.6</b>	<b>15 / 15</b>	---	---	---
HKR-03*	10.8 / 12.5	17 / 19	20 / 20	---	---	---
HKR-05* / -05C*	17.2 / 19.8	25 / 28	30 / 30	---	---	---
HKR-06*	21.6 / 25.0	31 / 35	35 / 35	---	---	---
HKR-08* / -08C*	25.3 / 29.2	35 / 40	40 / 45	---	---	---
HKR-10* / -10C*	34.3 / 39.6	47 / 53	50 / 60	---	---	---
HKR-15C*	34.3 / 39.6	47 / 53	50 / 60	17.2 / 19.8	21 / 25	25 / 25
^HKR3-15*	0 / 0	3.6 / 3.6	15 / 15	31.2 / 36.1	39 / 45	40 / 50
<b>ASPF303616**</b>	<b>0 / 0</b>	<b>3.8 / 3.8</b>	<b>15 / 15</b>	---	---	---
HKR-03*	10.8 / 12.5	15 / 17	20 / 20	---	---	---
HKR-05* / -05C*	17.1 / 19.8	24 / 27	30 / 30	---	---	---
HKR-06*	21.6 / 25.0	32 / 37	40 / 40	---	---	---
HKR-08* / -08C*	25.3 / 29.2	35 / 40	40 / 40	---	---	---
HKR-10* / -10C*	34.3 / 39.6	48 / 55	60 / 60	---	---	---
HKR-15C*	34.3 / 39.6	46 / 53	60 / 60	17.2 / 19.8	21 / 25	30 / 30
HKR-20C*	34.3 / 39.6	51 / 57	60 / 60	34.3 / 39.6	43 / 50	60 / 60
HKR-21C*	37.9 / 43.8	54 / 60	60 / 60	37.9 / 43.8	48 / 55	60 / 60
^HKR3-15*	0 / 0	3.8 / 3.8	15 / 15	31.2 / 36.1	39 / 45	60 / 60
^HKR3-20*	0 / 0	3.8 / 3.8	15 / 15	40.6 / 46.9	51 / 59	60 / 60
<b>ASPF313716A*</b>	<b>0 / 0</b>	<b>3.8 / 3.8</b>	<b>15 / 15</b>	---	---	---
HKR-03*	10.8 / 12.5	15 / 17	20 / 20	---	---	---
HKR-05* / -05C*	17.1 / 19.8	24 / 27	30 / 30	---	---	---
HKR-06*	21.6 / 25.0	32 / 37	40 / 40	---	---	---
HKR-08* / -08C*	25.3 / 29.2	35 / 40	40 / 40	---	---	---
HKR-10* / -10C*	34.3 / 39.6	48 / 55	60 / 60	---	---	---
HKR-15C*	34.3 / 39.6	46 / 53	60 / 60	17.2 / 19.8	21 / 25	30 / 30
HKR-20C*	34.3 / 39.6	51 / 57	60 / 60	34.3 / 39.6	43 / 50	60 / 60
HKR-21C*	37.9 / 43.8	54 / 60	60 / 60	37.9 / 43.8	48 / 55	60 / 60
^HKR3-15*	0 / 0	3.8 / 3.8	15 / 15	31.2 / 36.1	39 / 45	60 / 60
^HKR3-20*	0 / 0	3.8 / 3.8	15 / 15	40.6 / 46.9	51 / 59	60 / 60

See Notes on Page 5.

## AIR HANDLER ELECTRICAL DATA (CONT.)

MODEL & HEAT KIT USAGE	CIRCUIT 1			CIRCUIT 2		
	HEATER AMPS	MCA <sup>1</sup>	MOP <sup>2</sup>	HEATER AMPS	MCA <sup>1</sup>	MOP <sup>2</sup>
<b>ASPF313716D*</b>	<b>0 / 0</b>	<b>3.9 / 3.9</b>	<b>15 / 15</b>	---	---	---
HKR-03*	10.8 / 12.5	17 / 20	20 / 20	---	---	---
HKR-05* / -05C*	17.2 / 19.8	25 / 29	30 / 30	---	---	---
HKR-06*	21.6 / 25.0	31 / 35	35 / 40	---	---	---
HKR-08* / -08C*	25.3 / 29.2	35 / 40	40 / 45	---	---	---
HKR-10* / -10C*	34.3 / 39.6	47 / 53	50 / 60	---	---	---
HKR-15C*	34.3 / 39.6	47 / 53	50 / 60	17.2 / 19.8	21 / 25	25 / 25
HKR-20C*	34.3 / 39.6	47 / 53	50 / 60	34.3 / 39.6	43 / 49	45 / 50
HKR-21C*	37.9 / 43.8	51 / 59	60 / 60	37.9 / 43.8	47 / 55	50 / 60
^HKR3-15*	0 / 0	3.9 / 3.9	15 / 15	31.2 / 36.1	39 / 45	40 / 50
^HKR3-20*	0 / 0	3.9 / 3.9	15 / 15	40.6 / 46.9	51 / 59	60 / 60
<b>ASPF426016B*</b>	<b>0 / 0</b>	<b>5.3 / 5.3</b>	<b>15 / 15</b>	---	---	---
HKR-03*	10.8 / 12.5	15 / 17	20 / 20	---	---	---
HKR-05* / -05C*	17.1 / 19.8	24 / 27	30 / 30	---	---	---
HKR-06*	21.6 / 25.0	32 / 37	40 / 40	---	---	---
HKR-08* / -08C*	25.3 / 29.2	35 / 40	40 / 40	---	---	---
HKR-10* / -10C*	34.3 / 39.6	46 / 53	60 / 60	---	---	---
HKR-15C*	34.3 / 39.6	51 / 57	60 / 60	17.2 / 19.8	21 / 25	30 / 30
HKR-20C*	34.3 / 39.6	51 / 57	60 / 60	34.3 / 39.6	43 / 50	60 / 60
HKR-21C*	37.9 / 43.8	54 / 60	60 / 60	37.9 / 43.8	48 / 55	60 / 60
^HKR3-15*	0 / 0	5.3 / 5.3	15 / 15	31.2 / 36.1	39 / 45	60 / 60
^HKR3-20*	0 / 0	5.3 / 5.3	15 / 15	40.6 / 46.9	51 / 59	60 / 60
<b>ASPF426016D*</b>	<b>0 / 0</b>	<b>6.4 / 6.4</b>	<b>15 / 15</b>	---	---	---
HKR-03*	10.8 / 12.5	20 / 22	20 / 25	---	---	---
HKR-05* / -05C*	17.2 / 19.8	28 / 31	30 / 35	---	---	---
HKR-06*	21.6 / 25.0	33 / 38	35 / 40	---	---	---
HKR-08* / -08C*	25.3 / 29.2	38 / 43	40 / 45	---	---	---
HKR-10* / -10C*	34.3 / 39.6	49 / 56	50 / 60	---	---	---
HKR-15C*	34.3 / 39.6	49 / 56	50 / 60	17.2 / 19.8	21 / 25	25 / 25
HKR-20C*	34.3 / 39.6	49 / 56	50 / 60	34.3 / 39.6	43 / 49	45 / 50
^HKR3-15*	0 / 0	6.4 / 6.4	15 / 15	31.2 / 36.1	39 / 45	40 / 50
^HKR3-20*	0 / 0	6.4 / 6.4	15 / 15	40.6 / 46.9	51 / 59	60 / 60

<b>ARUF172916 **</b>	<b>0 / 0</b>	<b>2.1 / 2.1</b>	<b>15 / 15</b>	---	---	---
HKR-03*	10.8 / 12.5	16 / 18	20 / 20	---	---	---
HKR-05* / 05C*	17.1 / 19.8	24 / 27	30 / 30	---	---	---
HKR-06*	21.6 / 25.0	30 / 34	40 / 40	---	---	---
HKR-08* / -08C*	25.2 / 29.1	34 / 39	40 / 40	---	---	---
HKR-10* / -10C*	34.3 / 39.6	45 / 52	60 / 60	---	---	---
HKR-15C*	34.3 / 39.6	45 / 52	60 / 60	17.2 / 19.8	22 / 25	30 / 30

<sup>1</sup> Minimum Circuit Ampacity (Heater Amps + Motor Amps) X 1.25

<sup>2</sup> Maximum Overcurrent Protection = 2.25 X Motor Amps + Heater Amps

^ Circuit 1: Single-phase for Air Handlers    Circuit 2: Three-phase for HKR3 Heater Kits

\* Revision level that may or may not be designated

C = Circuit Breaker Option

--- indicates Not Required

## AIR HANDLER ELECTRICAL DATA (CONT.)

MODEL & HEAT KIT USAGE	CIRCUIT 1			CIRCUIT 2		
	HEATER AMPS	MCA <sup>1</sup>	MOP <sup>2</sup>	HEATER AMPS	MCA <sup>1</sup>	MOP <sup>2</sup>
<b>ARUF182416 ** / ARPF182416 ** / ADPF182416 **</b>	<b>0 / 0</b>	<b>2.1 / 2.1</b>	<b>15 / 15</b>	---	---	---
HKR-03*	10.8 / 12.5	16 / 18	20 / 20	---	---	---
HKR-05* / 05C*	17.1 / 19.8	24 / 27	30 / 30	---	---	---
HKR-06*	21.6 / 25.0	30 / 34	40 / 40	---	---	---
HKR-08* / -08C*	25.2 / 29.1	34 / 39	40 / 40	---	---	---
HKR-10* / -10C*	34.3 / 39.6	45 / 52	60 / 60	---	---	---
HKR-15C*	34.3 / 39.6	45 / 52	60 / 60	17.2 / 19.8	22 / 25	30 / 30
<b>ARUF193116 ** / ARPF193116 **</b>	<b>0 / 0</b>	<b>1.9 / 1.9</b>	<b>15 / 15</b>	---	---	---
HKR-03*	10.8 / 12.5	15 / 17	20 / 20	---	---	---
HKR-05* / 05C*	17.1 / 19.8	23 / 27	30 / 30	---	---	---
HKR-06*	21.6 / 25.0	29 / 33	40 / 40	---	---	---
HKR-08* / -08C*	25.2 / 29.1	33 / 38	40 / 40	---	---	---
HKR-10* / -10C*	34.3 / 39.6	45 / 51	60 / 60	---	---	---
HKR-15C*	34.3 / 39.6	45 / 51	60 / 60	17.2 / 19.8	22 / 25	30 / 30
<b>ARUF303016 ** / ARPF303016 **</b>	<b>0 / 0</b>	<b>3.3 / 3.3</b>	<b>15 / 15</b>	---	---	---
HKR-03*	10.8 / 12.5	17 / 19	20 / 20	---	---	---
HKR-05* / 05C*	17.1 / 19.8	25 / 28	30 / 30	---	---	---
HKR-06*	21.6 / 25.0	30 / 35	40 / 40	---	---	---
HKR-08* / -08C*	25.2 / 29.1	35 / 40	40 / 40	---	---	---
HKR-10* / -10C*	34.3 / 39.6	46 / 53	60 / 60	---	---	---
HKR-15C*	34.3 / 39.6	46 / 53	60 / 60	17.2 / 19.8	22 / 25	30 / 30
HKR-20C*	34.3 / 39.6	46 / 53	60 / 60	34.3 / 39.6	43 / 49	60 / 60
HKR-21C*	37.9 / 43.8	51 / 58	60 / 60	37.9 / 43.8	48 / 55	60 / 60
^HKR3-15*	0 / 0	3.3 / 3.3	15 / 15	31.2 / 36.1	39 / 45	60 / 60
^HKR3-20*	0 / 0	3.3 / 3.3	15 / 15	40.6 / 46.9	51 / 59	60 / 60
<b>ARUF364216 ** / ARPF364216 ** / ADPF304216 **</b>	<b>0 / 0</b>	<b>3.7 / 3.7</b>	<b>15 / 15</b>	---	---	---
HKR-03*	10.8 / 12.5	17 / 19	20 / 20	---	---	---
HKR-05* / 05C*	17.1 / 19.8	25 / 28	30 / 30	---	---	---
HKR-06*	21.6 / 25.0	31 / 35	40 / 40	---	---	---
HKR-08* / -08C*	25.2 / 29.1	35 / 40	40 / 40	---	---	---
HKR-10* / -10C*	34.3 / 39.6	47 / 53	60 / 60	---	---	---
HKR-15C*	34.3 / 39.6	47 / 53	60 / 60	17.2 / 19.8	22 / 25	30 / 30
HKR-20C*	34.3 / 39.6	47 / 53	60 / 60	34.3 / 39.6	43 / 49	60 / 60
HKR-21C*	37.9 / 43.8	51 / 58	60 / 60	37.9 / 43.8	48 / 55	60 / 60
^HKR3-15*	0 / 0	3.7 / 3.7	15 / 15	31.2 / 36.1	39 / 45	60 / 60
^HKR3-20*	0 / 0	3.7 / 3.7	15 / 15	40.6 / 46.9	51 / 59	60 / 60
<b>ARUF374316 ** / ARPF374316 **</b>	<b>0 / 0</b>	<b>4.2 / 4.2</b>	<b>15 / 15</b>	---	---	---
HKR-03*	10.8 / 12.5	18 / 20	20 / 20	---	---	---
HKR-05* / 05C*	17.1 / 19.8	26 / 29	30 / 30	---	---	---
HKR-06*	21.6 / 25.0	31 / 35	40 / 40	---	---	---
HKR-08* / -08C*	25.2 / 29.1	36 / 41	40 / 40	---	---	---
HKR-10* / -10C*	34.3 / 39.6	47 / 54	60 / 60	---	---	---
HKR-15C*	34.3 / 39.6	47 / 54	60 / 60	17.2 / 19.8	22 / 25	30 / 30
HKR-20C*	34.3 / 39.6	47 / 54	60 / 60	34.3 / 39.6	43 / 49	60 / 60
HKR-21C*	37.9 / 43.8	52 / 59	60 / 60	37.9 / 43.8	48 / 55	60 / 60
^HKR3-15*	0 / 0	4.2 / 4.2	15 / 15	31.2 / 36.1	39 / 45	60 / 60
^HKR3-20*	0 / 0	4.2 / 4.2	15 / 15	40.6 / 46.9	51 / 59	60 / 60

See Notes on Page 7.

## AIR HANDLER ELECTRICAL DATA (CONT.)

MODEL & HEAT KIT USAGE	CIRCUIT 1			CIRCUIT 2		
	HEATER AMPS	MCA <sup>1</sup>	MOP <sup>2</sup>	HEATER AMPS	MCA <sup>1</sup>	MOP <sup>2</sup>
<b>ARUF486016 ** / ARPF486016 ** / ADPF486016 **</b>	<b>0 / 0</b>	<b>5.4 / 5.4</b>	<b>15 / 15</b>	---	---	---
HKR-03*	10.8 / 12.5	19 / 21	20 / 20	---	---	---
HKR-05* / 05C*	17.1 / 19.8	27 / 30	30 / 30	---	---	---
HKR-06*	21.6 / 25.0	32 / 37	40 / 40	---	---	---
HKR-08* / -08C*	25.2 / 29.1	37 / 39	40 / 40	---	---	---
HKR-10* / -10C*	34.3 / 39.6	48 / 55	60 / 60	---	---	---
HKR-15C*	34.3 / 39.6	48 / 55	60 / 60	17.2 / 19.8	22 / 25	30 / 30
HKR-20C*	34.3 / 39.6	48 / 55	60 / 60	34.3 / 39.6	43 / 49	60 / 60
HKR-21C*	37.9 / 43.8	53 / 59	60 / 60	37.9 / 43.8	48 / 55	60 / 60
^HKR3-15*	0 / 0	5.4 / 5.4	15 / 15	31.2 / 36.1	39 / 45	60 / 60
^HKR3-20*	0 / 0	5.4 / 5.4	15 / 15	40.6 / 46.9	51 / 59	60 / 60

<b>A24-00-2R *</b>	<b>0 / 0</b>	<b>1.0 / 1.0</b>	<b>15 / 15</b>	---	---	---
HKR-03*	11.4 / 12.5	15 / 17	20 / 20	---	---	---
HKR-05* / 05C*	18.1 / 19.8	24 / 26	30 / 30	---	---	---
HKR-06*	22.9 / 25.0	30 / 32	40 / 40	---	---	---
HKR-08* / -08C*	26.7 / 29.1	34 / 37	40 / 40	---	---	---
HKR-10* / -10C*	36.3 / 39.6	46 / 51	60 / 60	---	---	---
<b>A36-00-2R * / A48-00-2R *</b>	<b>0 / 0</b>	<b>1.8 / 1.8</b>	<b>15 / 15</b>	---	---	---
HKR-03*	11.4 / 12.5	16 / 17	20 / 20	---	---	---
HKR-05* / 05C*	18.1 / 19.8	24 / 27	30 / 30	---	---	---
HKR-06*	22.9 / 25.0	30 / 33	40 / 40	---	---	---
HKR-08* / -08C*	26.7 / 29.1	35 / 38	40 / 40	---	---	---
HKR-10* / -10C*	36.3 / 39.6	47 / 51	60 / 60	---	---	---
HKR-15C*	36.3 / 39.6	47 / 51	60 / 60	18.1 / 19.8	23 / 25	30 / 30
HKR-20C*	36.3 / 39.6	47 / 51	60 / 60	36.3 / 39.6	45 / 50	60 / 60
<b>A60-00-2R *</b>	<b>0 / 0</b>	<b>4.3 / 4.3</b>	<b>15 / 15</b>	---	---	---
HKR-03*	11.4 / 12.5	18 / 19	20 / 20	---	---	---
HKR-05* / 05C*	18.1 / 19.8	26 / 28	30 / 30	---	---	---
HKR-06*	22.9 / 25.0	32 / 35	40 / 40	---	---	---
HKR-08* / -08C*	26.7 / 29.1	37 / 40	40 / 40	---	---	---
HKR-10* / -10C*	36.3 / 39.6	49 / 53	60 / 60	---	---	---
HKR-15C*	36.3 / 39.6	49 / 53	60 / 60	18.1 / 19.8	23 / 25	30 / 30
HKR-20C*	36.3 / 39.6	49 / 53	60 / 60	36.3 / 39.6	45 / 50	60 / 60

<sup>1</sup> Minimum Circuit Ampacity @ 208 / 240 V

<sup>2</sup> Maximum Overcurrent Protection Device @ 208 / 240 V

\* Revision level that may or may not be designated

C Circuit breaker option

^ Heat Kit requires three-phase power supply

**Note:** All HKR ampacities noted above include air handler motor amps, excluding three-phase models.

## AIR HANDLER ELECTRICAL DATA (CONT.)

MODEL & HEAT KIT USAGE	CIRCUIT 1			CIRCUIT 2		
	HEATER AMPS	MCA <sup>1</sup>	MOP <sup>2</sup>	HEATER AMPS	MCA <sup>1</sup>	MOP <sup>2</sup>
<b>MBR0800AA-1 **</b>	<b>0 / 0</b>	<b>1.9 / 1.9</b>	<b>15 / 15</b>	---	---	---
HKR-03*	10.8 / 12.5	15 / 17	20 / 20	---	---	---
HKR-05* / 05C*	17.1 / 19.8	23 / 26	30 / 30	---	---	---
HKR-06*	21.6 / 25.0	29 / 33	40 / 40	---	---	---
HKR-08* / -08C*	25.3 / 29.2	33 / 38	40 / 40	---	---	---
HKR-10* / -10C*	34.3 / 39.6	44 / 51	60 / 60	---	---	---
<b>MBR1200AA-1 **</b>	<b>0 / 0</b>	<b>3.0 / 3.0</b>	<b>15 / 15</b>	---	---	---
HKR-03*	10.8 / 12.5	16 / 18	20 / 20	---	---	---
HKR-05* / 05C*	17.1 / 19.8	24 / 27	40 / 40	---	---	---
HKR-06*	21.6 / 25.0	29 / 34	40 / 40	---	---	---
HKR-08* / -08C*	25.3 / 29.2	34 / 39	40 / 40	---	---	---
HKR-10* / -10C*	34.3 / 39.6	45 / 52	60 / 60	---	---	---
HKR-15C*	34.3 / 39.6	45 / 52	60 / 60	17.2 / 19.8	22 / 25	30 / 30
HKR-20C*	34.3 / 39.6	45 / 52	60 / 60	34.3 / 39.6	43 / 50	60 / 60
HKR-21C*	37.9 / 43.8	50 / 57	60 / 60	37.9 / 43.8	47 / 55	60 / 60
^HKR3-15*	0 / 0	3.0 / 3.0	15 / 15	31.2 / 36.1	39 / 45	60 / 60
^HKR3-20*	0 / 0	3.0 / 3.0	15 / 15	40.6 / 46.9	51 / 59	60 / 60
<b>MBR1600AA-1 **</b>	<b>0 / 0</b>	<b>3.8 / 3.8</b>	<b>15 / 15</b>	---	---	---
HKR-03*	10.8 / 12.5	17 / 19	20 / 20	---	---	---
HKR-05* / 05C*	17.1 / 19.8	24 / 28	40 / 40	---	---	---
HKR-06*	21.6 / 25.0	30 / 34	40 / 40	---	---	---
HKR-08* / -08C*	25.3 / 29.2	35 / 39	40 / 40	---	---	---
HKR-10* / -10C*	34.3 / 39.6	46 / 53	60 / 60	---	---	---
HKR-15C*	34.3 / 39.6	46 / 53	60 / 60	17.2 / 19.8	22 / 25	30 / 30
HKR-20C*	34.3 / 39.6	46 / 53	60 / 60	34.3 / 39.6	43 / 50	60 / 60
HKR-21C*	37.9 / 43.8	50 / 58	60 / 60	37.9 / 43.8	47 / 55	60 / 60
^HKR3-15*	0 / 0	3.8 / 3.8	15 / 15	31.26 / 36.1	39 / 45	60 / 60
^HKR3-20*	0 / 0	3.8 / 3.8	15 / 15	40.6 / 46.9	51 / 59	60 / 60
<b>MBR2000AA-1 **</b>	<b>0 / 0</b>	<b>4.9 / 4.9</b>	<b>15 / 15</b>	---	---	---
HKR-03*	10.8 / 12.5	17 / 20	20 / 20	---	---	---
HKR-05* / 05C*	17.1 / 19.8	25 / 29	40 / 40	---	---	---
HKR-06*	21.6 / 25.0	31 / 35	40 / 40	---	---	---
HKR-08* / -08C*	25.3 / 29.2	36 / 40	60 / 60	---	---	---
HKR-10* / -10C*	34.3 / 39.6	47 / 53	60 / 60	---	---	---
HKR-15C*	34.3 / 39.6	47 / 53	60 / 60	17.2 / 19.8	22 / 25	30 / 30
HKR-20C*	34.3 / 39.6	47 / 53	60 / 60	34.3 / 39.6	43 / 50	60 / 60
HKR-21C*	37.9 / 43.8	51 / 59	60 / 60	37.9 / 43.8	47 / 55	60 / 60
^HKR3-15*	0 / 0	4.9 / 4.9	15 / 15	31.2 / 36.1	39 / 45	60 / 60
^HKR3-20*	0 / 0	4.9 / 4.9	15 / 15	40.6 / 46.9	51 / 59	60 / 60
<b>MBE1200AA-1A*</b>	<b>0 / 0</b>	<b>3.1 / 3.1</b>	<b>15 / 15</b>	--	--	--
HKR-08*, HKR-08C*	25.3 / 29.2	34 / 39	40 / 40	--	--	--
HKR-10*, HKR-10C*	34.3 / 39.6	45 / 52	60 / 60	--	--	--
HKR-15C*	34.3 / 39.6	45 / 52	60 / 60	17.2/19.8	22/25	30 / 30

See Notes on Page 10.



## AIR HANDLER ELECTRICAL DATA (CONT.)

MODEL & HEAT KIT USAGE	CIRCUIT 1			CIRCUIT 2		
	HEATER AMPS	MCA <sup>1</sup>	MOP <sup>2</sup>	HEATER AMPS	MCA <sup>1</sup>	MOP <sup>2</sup>
MBE1600AA-1A*	0 / 0	5.6 / 5.6	15 / 15	---	--	--
HKR-10*, HKR-10C*	34.3 / 39.6	47 / 54	60 / 60	---	--	--
HKR-15C*	34.3 / 39.6	47 / 54	60 / 60	17.2/19.8	22/25	30 / 30
MBE2000AA-1A*	0 / 0	4.4 / 4.4	15 / 15	--	--	--
HKR-10*, HKR-10C*	34.3 / 39.6	46 / 53	60 / 60	--	--	--
HKR-15C*	34.3 / 39.6	46 / 53	60 / 60	17.2/19.8	22/25	30 / 30
HKR-20C*	34.3 / 39.6	46 / 53	60 / 60	34.3 / 39.6	43 / 50	60 / 60
MBE1200AA-1B*	0 / 0	3.1 / 3.1	15 / 15	---	---	---
HKR-03*	10.8 / 12.5	17 / 19	20 / 20	---	---	---
HKR-05* / 05C*	17.1 / 19.8	24 / 28	30 / 30	---	---	---
HKR-06*	21.6 / 25.0	30 / 34	40 / 40	---	---	---
HKR-08* / -08C*	25.3 / 29.2	34 / 39	40 / 40	---	---	---
HKR-10* / -10C*	34.3 / 39.6	45 / 52	60 / 60	---	---	---
HKR-15C*	34.3 / 39.6	45 / 52	60 / 60	17.2 / 19.8	22 / 25	30 / 30
MBE1600AA-1B*	0 / 0	5.6 / 5.6	15 / 15	---	---	---
HKR-03*	10.8 / 12.5	19 / 21	30 / 30	---	---	---
HKR-05* / 05C*	17.1 / 19.8	27 / 30	40 / 40	---	---	---
HKR-06*	21.6 / 25.0	33 / 37	40 / 40	---	---	---
HKR-08* / -08C*	25.3 / 29.2	37 / 42	60 / 60	---	---	---
HKR-10* / -10C*	34.3 / 39.6	47 / 54	60 / 60	---	---	---
HKR-15C*	34.3 / 39.6	47 / 54	60 / 60	17.2 / 19.8	22 / 25	30 / 30
MBE2000AA-1B*	0 / 0	4.4 / 4.4	15 / 15	---	---	---
HKR-03*	10.8 / 12.5	18 / 20	20 / 20	---	---	---
HKR-05* / 05C*	17.1 / 19.8	26 / 29	30 / 30	---	---	---
HKR-06*	21.6 / 25.0	31 / 36	40 / 40	---	---	---
HKR-08* / -08C*	25.3 / 29.2	36 / 41	60 / 60	---	---	---
HKR-10* / -10C*	34.3 / 39.6	46 / 53	60 / 60	---	---	---
HKR-15C*	34.3 / 39.6	46 / 53	60 / 60	17.2 / 19.8	22 / 25	30 / 30
HKR-20C*	34.3 / 39.6	46 / 53	60 / 60	34.3 / 39.6	43 / 50	60 / 60
MBE1200AA-1A*	0 / 0	3.1 / 3.1	15 / 15	---	---	---
HKR-08*, HKR-08C*	25.3 / 29.2	34 / 39	40 / 40	--	--	--
HKR-10*, HKR-10C*	34.3 / 39.6	45 / 52	60 / 60	--	--	--
HKR-15C*	34.3 / 39.6	45 / 52	60 / 60	17.2/19.8	22/25	30 / 30
MBE1600AA-1A*	0 / 0	5.6 / 5.6	15 / 15	---	---	---
HKR-10*, HKR-10C*	34.3 / 39.6	47 / 54	60 / 60	---	--	--
HKR-15C*	34.3 / 39.6	47 / 54	60 / 60	17.2/19.8	22/25	30 / 30
MBE2000AA-1A*	0 / 0	4.4 / 4.4	15 / 15	---	---	---
HKR-10*, HKR-10C*	34.3 / 39.6	46 / 53	60 / 60	--	--	--
HKR-15C*	34.3 / 39.6	46 / 53	60 / 60	17.2/19.8	22/25	30 / 30
HKR-20C*	34.3 / 39.6	46 / 53	60 / 60	34.3 / 39.6	43 / 50	60 / 60
MBE1200AA-1B*	0 / 0	3.1 / 3.1	15 / 15	---	---	---
HKR-03*	10.8 / 12.5	17 / 19	20 / 20	---	---	---
HKR-05* / 05C*	17.1 / 19.8	24 / 28	30 / 30	---	---	---
HKR-06*	21.6 / 25.0	30 / 34	40 / 40	---	---	---
HKR-08* / -08C*	25.3 / 29.2	34 / 39	40 / 40	---	---	---
HKR-10* / -10C*	34.3 / 39.6	45 / 52	60 / 60	---	---	---
HKR-15C*	34.3 / 39.6	45 / 52	60 / 60	17.2 / 19.8	22 / 25	30 / 30

See Notes on Page 10.

## AIR HANDLER ELECTRICAL DATA (CONT.)

MODEL & HEAT KIT USAGE	CIRCUIT 1			CIRCUIT 2		
	HEATER AMPS	MCA <sup>1</sup>	MOP <sup>2</sup>	HEATER AMPS	MCA <sup>1</sup>	MOP <sup>2</sup>
MBE1600AA-1B*	0 / 0	5.6 / 5.6	15 / 15	---	---	---
HKR-03*	10.8 / 12.5	19 / 21	30 / 30	---	---	---
HKR-05* / 05C*	17.1 / 19.8	27 / 30	40 / 40	---	---	---
HKR-06*	21.6 / 25.0	33 / 37	40 / 40	---	---	---
HKR-08* / -08C*	25.3 / 29.2	37 / 42	60 / 60	---	---	---
HKR-10* / -10C*	34.3 / 39.6	47 / 54	60 / 60	---	---	---
HKR-15C*	34.3 / 39.6	47 / 54	60 / 60	17.2 / 19.8	22 / 25	30 / 30
MBE2000AA-1B*	0 / 0	4.4 / 4.4	15 / 15	---	---	---
HKR-03*	10.8 / 12.5	18 / 20	20 / 20	---	---	---
HKR-05* / 05C*	17.1 / 19.8	26 / 29	30 / 30	---	---	---
HKR-06*	21.6 / 25.0	31 / 36	40 / 40	---	---	---
HKR-08* / -08C*	25.3 / 29.2	36 / 41	60 / 60	---	---	---
HKR-10* / -10C*	34.3 / 39.6	46 / 53	60 / 60	---	---	---
HKR-15C*	34.3 / 39.6	46 / 53	60 / 60	17.2 / 19.8	22 / 25	30 / 30
HKR-20C*	34.3 / 39.6	46 / 53	60 / 60	34.3 / 39.6	43 / 50	60 / 60
MBVC1200AA-1A*	0 / 0	4.3 / 4.3	15 / 15	---	---	---
HKR-03*	10.8 / 12.5	17.8 / 19.9	20 / 20	---	---	---
HKR-05* / 05C*	17.2 / 19.8	25.7 / 29.0	30 / 30	---	---	---
HKR-06*	21.7 / 25.0	31.3 / 35.5	35 / 40	---	---	---
HKR-08* / -08C*	25.3 / 29.2	35.8 / 40.7	40 / 45	---	---	---
HKR-10* / -10C*	34.3 / 39.6	47.1 / 53.7	50 / 60	---	---	---
HKR-15C*	34.3 / 39.6	47.1 / 53.7	50 / 60	17.2 / 19.8	21.4 / 24.7	25 / 25
MBVC1600AA-1A*	0 / 0	6.3 / 6.3	15 / 15	---	---	---
HKR-03*	10.8 / 12.5	19.8 / 21.9	20 / 25	---	---	---
HKR-05* / 05C*	17.2 / 19.8	27.7 / 31.0	30 / 35	---	---	---
HKR-06*	21.7 / 25.0	33.3 / 37.5	35 / 40	---	---	---
HKR-08* / -08C*	25.3 / 29.2	37.8 / 42.7	40 / 45	---	---	---
HKR-10* / -10C*	34.3 / 39.6	49.1 / 55.7	50 / 60	---	---	---
HKR-15C*	34.3 / 39.6	49.1 / 55.7	50 / 60	17.2 / 19.8	21.4 / 24.7	25 / 25
MBVC2000AA-1A*	0 / 0	5.8 / 5.8	15 / 15	---	---	---
HKR-03*	10.8 / 12.5	19.3 / 21.4	20 / 25	---	---	---
HKR-05* / 05C*	17.2 / 19.8	27.2 / 30.5	30 / 35	---	---	---
HKR-06*	21.7 / 25.0	32.8 / 37.0	35 / 40	---	---	---
HKR-08* / -08C*	25.3 / 29.2	37.3 / 42.2	40 / 45	---	---	---
HKR-10* / -10C*	34.3 / 39.6	48.6 / 55.2	50 / 60	---	---	---
HKR-15C*	34.3 / 39.6	48.6 / 55.2	50 / 60	17.2 / 19.8	21.4 / 24.7	25 / 25
HKR-20C*	34.3 / 39.6	48.6 / 55.2	50 / 60	34.3 / 39.6	42.9 / 49.5	45 / 50

<sup>1</sup> Minimum Circuit Ampacity @ 208 / 240 V

<sup>2</sup> Maximum Overcurrent Protection Device @ 208 / 240 V

\* Revision level that may or may not be designated

C Circuit breaker option

^ Heat Kit requires three-phase power supply

**Note:** All HKR ampacities noted above include air handler motor amps, excluding three-phase models.

## ELECTRICAL DATA FOR GPC “H” SERIES PACKAGED UNITS (BLOWER ONLY, HEAT MODE)

MODEL AND HEAT KIT USAGE	CIRCUIT #1		CIRCUIT #2		ACTUAL KW / BTU@ 240V
	MCA <sup>1</sup>	MOP <sup>2</sup>	MCA <sup>1</sup>	MOP <sup>2</sup>	
<b>GPC1324H21A, AB</b>	1.5 / 1.5	--	--	--	--
HKR-05*, HKR-05C*	24 / 27	30 / 30	--	--	4.75 / 16,200
HKR-08*, HKR-08C*	33 / 38	40 / 40	--	--	7 / 23,800
HKR-10*, HKR-10C*	45 / 51	60 / 60	--	--	9.5 / 32,400
<b>GPC1330H21A, AB</b>	2.4 / 2.4	--	--	--	--
HKR-05*, HKR-05C*	24 / 27	30 / 30	--	--	4.75 / 16,200
HKR-08*, HKR-08C*	34 / 39	40 / 40	--	--	7 / 23,800
HKR-10*, HKR-10C*	45 / 52	60 / 60	--	--	9.5 / 32,400
HKR-15*, HKR-15C*	45 / 52	60 / 60	22 / 25	30 / 30	14.25 / 48,600
<b>GPC1336H21A, AB</b>	2.4 / 2.4	--	--	--	--
HKR-05*, HKR-05C*	24 / 27	30 / 30	--	--	4.75 / 16,200
HKR-08*, HKR-08C*	34 / 39	40 / 40	--	--	7 / 23,800
HKR-10*, HKR-10C*	45 / 52	60 / 60	--	--	9.5 / 32,400
HKR-15*, HKR-15C*	45 / 52	60 / 60	22 / 25	30 / 30	14.25 / 48,600
<b>GPC1342H21A, AB</b>	3.9 / 3.9	--	--	--	--
HKR-05*, HKR-05C*	25 / 27	30 / 30	--	--	4.75 / 16,200
HKR-08*, HKR-08C*	34 / 39	40 / 40	--	--	7 / 23,800
HKR-10*, HKR-10C*	46 / 52	60 / 60	--	--	9.5 / 32,400
HKR-15*, HKR-15C*	46 / 52	60 / 60	22 / 25	30 / 30	14.25 / 48,600
HKR-20*, HKR-20C*	46 / 52	60 / 60	43 / 49	60 / 60	19.5 / 66,500
<b>GPC1348H21A, AB</b>	3.9 / 3.9	--	--	--	--
HKR-05*, HKR-05C*	25 / 28	30 / 30	--	--	4.75 / 16,200
HKR-08*, HKR-08C*	34 / 40	40 / 40	--	--	7 / 23,800
HKR-10*, HKR-10C*	46 / 53	60 / 60	--	--	9.5 / 32,400
HKR-15*, HKR-15C*	46 / 52	60 / 60	22 / 25	30 / 30	14.25 / 48,600
HKR-20*, HKR-20C*	46 / 52	60 / 60	43 / 49	60 / 60	19.5 / 66,500
<b>GPC1360H21A, AA</b>	6.0 / 6.0	--	--	--	--
HKR-05*, HKR-05C*	26 / 30	30 / 30	--	--	4.75 / 16,200
HKR-08*, HKR-08C*	36 / 40	40 / 40	--	--	7 / 23,800
HKR-10*, HKR-10C*	48 / 54	60 / 60	--	--	9.5 / 32,400
HKR-15*, HKR-15C*	48 / 54	60 / 60	22 / 25	30 / 30	14.25 / 48,600
HKR-20*, HKR-20C*	48 / 54	60 / 60	43 / 49	60 / 60	19.5 / 66,500

<sup>1</sup> Minimum Circuit Ampacity @ 208 / 240 V

<sup>2</sup> Maximum Overcurrent Protection Device @ 208 / 240 V

\* Revision level that may or may not be designated

C Circuit breaker option

^ Heat Kit requires three-phase power supply

NOTE: All HKR ampacities noted above include air handler motor amps, excluding three-phase models.

## ELECTRICAL DATA FOR GPH “H” SERIES PACKAGED UNITS (BLOWER ONLY, HEAT MODE)

MODEL AND HEAT KIT USAGE	CIRCUIT #1		CIRCUIT #2		ACTUAL KW / BTU@ 240V
	MCA <sup>1</sup>	MOP <sup>2</sup>	MCA <sup>1</sup>	MOP <sup>2</sup>	
<b>GPH1324H21A, AB</b>	1.5 / 1.5	--	--	--	--
HKR-05*, HKR-05C*	24 / 27	30 / 30	--	--	4.75 / 16,200
HKR-08*, HKR-08C*	33 / 38	40 / 40	--	--	7 / 23,800
HKR-10*, HKR-10C*	45 / 51	60 / 60	--	--	9.5 / 32,400
<b>GPH1330H21A, AB</b>	2.4 / 2.4	--	--	--	--
HKR-05*, HKR-05C*	24 / 27	30 / 30	--	--	4.75 / 16,200
HKR-08*, HKR-08C*	34 / 39	40 / 40	--	--	7 / 23,800
HKR-10*, HKR-10C*	45 / 52	60 / 60	--	--	9.5 / 32,400
HKR-15*, HKR-15C*	45 / 52	60 / 60	22 / 25	30 / 30	14.25 / 48,600
<b>GPH1336H21A, AB</b>	2.4 / 2.4	--	--	--	--
HKR-05*, HKR-05C*	24 / 27	30 / 30	--	--	4.75 / 16,200
HKR-08*, HKR-08C*	34 / 39	40 / 40	--	--	7 / 23,800
HKR-10*, HKR-10C*	45 / 52	60 / 60	--	--	9.5 / 32,400
HKR-15*, HKR-15C*	45 / 52	60 / 60	22 / 25	30 / 30	14.25 / 48,600
<b>GPH1342H21A, AB</b>	3.9 / 3.9	--	--	--	--
HKR-05*, HKR-05C*	25 / 27	30 / 30	--	--	4.75 / 16,200
HKR-08*, HKR-08C*	34 / 39	40 / 40	--	--	7 / 23,800
HKR-10*, HKR-10C*	46 / 52	60 / 60	--	--	9.5 / 32,400
HKR-15*, HKR-15C*	46 / 52	60 / 60	22 / 25	30 / 30	14.25 / 48,600
HKR-20*, HKR-20C*	46 / 52	60 / 60	43 / 49	60 / 60	19.5 / 66,500
<b>GPH1348H21A, AB</b>	3.9 / 3.9	--	--	--	--
HKR-05*, HKR-05C*	25 / 28	30 / 30	--	--	4.75 / 16,200
HKR-08*, HKR-08C*	34 / 40	40 / 40	--	--	7 / 23,800
HKR-10*, HKR-10C*	46 / 53	60 / 60	--	--	9.5 / 32,400
HKR-15*, HKR-15C*	46 / 52	60 / 60	22 / 25	30 / 30	14.25 / 48,600
HKR-20*, HKR-20C*	46 / 52	60 / 60	43 / 49	60 / 60	19.5 / 66,500
<b>GPH1360H21A, AA</b>	6.0 / 6.0	--	--	--	--
HKR-05*, HKR-05C*	26 / 30	30 / 30	--	--	4.75 / 16,200
HKR-08*, HKR-08C*	36 / 40	40 / 40	--	--	7 / 23,800
HKR-10*, HKR-10C*	48 / 54	60 / 60	--	--	9.5 / 32,400
HKR-15*, HKR-15C*	48 / 54	60 / 60	22 / 25	30 / 30	14.25 / 48,600
HKR-20*, HKR-20C*	48 / 54	60 / 60	43 / 49	60 / 60	19.5 / 66,500

<sup>1</sup> Minimum Circuit Ampacity @ 208 / 240 V

<sup>2</sup> Maximum Overcurrent Protection Device @ 208 / 240 V

\* Revision level that may or may not be designated

C Circuit breaker option

^ Heat Kit requires three-phase power supply

**Note:** All HKR ampacities noted above include air handler motor amps, excluding three-phase models.

## ELECTRICAL DATA FOR GPC “M” SERIES PACKAGED UNITS (BLOWER ONLY, HEAT MODE)

MODEL AND HEAT KIT USAGE	CIRCUIT #1		CIRCUIT #2		ACTUAL KW / BTU@ 240V
	MCA <sup>1</sup>	MOP <sup>2</sup>	MCA <sup>1</sup>	MOP <sup>2</sup>	
<b>GPC1336M21AA</b>	1.9 / 1.9	--	--	--	--
HKR-05*, HKR-05C*	24 / 27	30 / 30	--	--	4.75 / 16,200
HKR-08*, HKR-08C*	34 / 39	40 / 40	--	--	7.0 / 23,800
HKR-10*, HKR-10C*	45 / 52	60 / 60	--	--	9.5 / 32,400
HKR-15*, HKR-15C*	45 / 52	60 / 60	22 / 25	30 / 30	14.25 / 48,600
<b>GPC1348M21AA</b>	5.8 / 5.8	--	--	--	--
HKR-05*, HKR-05C*	25 / 28	30 / 30	--	--	4.75 / 16,200
HKR-08*, HKR-08C*	38 / 40	40 / 40	--	--	7.0 / 23,800
HKR-10*, HKR-10C*	49 / 56	60 / 60	--	--	9.5 / 32,400
HKR-15*, HKR-15C*	49 / 56	60 / 60	22 / 25	30 / 30	14.25 / 48,600
HKR-20*, HKR-20C*	49 / 56	60 / 60	43 / 49	60 / 60	19.5 / 66,500
<b>GPC1360M21AA</b>	7.6 / 7.6	--	--	--	--
HKR-05*, HKR-05C*	29 / 30	30 / 30	--	--	4.75 / 16,200
HKR-08*, HKR-08C*	39 / 40	40 / 40	--	--	7.0 / 23,800
HKR-10*, HKR-10C*	51 / 58	60 / 60	--	--	9.5 / 32,400
HKR-15*, HKR-15C*	51 / 58	60 / 60	22 / 25	30 / 30	14.25 / 48,600
HKR-20*, HKR-20C*	51 / 58	60 / 60	43 / 49	60 / 60	19.5 / 66,500

<sup>1</sup> Minimum Circuit Ampacity @ 208 / 240 V

<sup>2</sup> Maximum Overcurrent Protection Device @ 208 / 240 V

\* Revision level that may or may not be designated

C Circuit breaker option

^ Heat Kit requires three-phase power supply

NOTE: All HKR ampacities noted above include air handler motor amps, excluding three-phase models.

## ELECTRICAL DATA FOR GPH “M” SERIES PACKAGED UNITS (BLOWER ONLY, HEAT MODE)

MODEL AND HEAT KIT USAGE	CIRCUIT #1		CIRCUIT #2		ACTUAL KW / BTU@ 240V
	MCA <sup>1</sup>	MOP <sup>2</sup>	MCA <sup>1</sup>	MOP <sup>2</sup>	
<b>GPH1324M21AA</b>	1.5 / 1.5	--	--	--	--
HKR-05*, HKR-05C*	24 / 27	30 / 30	--	--	4.75 / 16,200
HKR-08*, HKR-08C*	34 / 39	40 / 40	--	--	7.0 / 23,800
HKR-10*, HKR-10C*	45 / 52	60 / 60	--	--	9.5 / 32,400
<b>GPH1330M21AA</b>	1.5 / 1.5	--	--	--	--
HKR-05*, HKR-05C*	24 / 27	30 / 30	--	--	4.75 / 16,200
HKR-08*, HKR-08C*	34 / 39	40 / 40	--	--	7.0 / 23,800
HKR-10*, HKR-10C*	45 / 52	60 / 60	--	--	9.5 / 32,400
HKR-15*, HKR-15C*	45 / 52	60 / 60	22 / 25	30 / 30	14.25 / 48,600
<b>GPH1336M21AA</b>	1.9 / 1.9	--	--	--	--
HKR-05*, HKR-05C*	24 / 27	30 / 30	--	--	4.75 / 16,200
HKR-08*, HKR-08C*	34 / 39	40 / 40	--	--	7.0 / 23,800
HKR-10*, HKR-10C*	45 / 52	60 / 60	--	--	9.5 / 32,400
HKR-15*, HKR-15C*	45 / 52	60 / 60	22 / 25	30 / 30	14.25 / 48,600
<b>GPH1348M21AA</b>	5.8 / 5.8	--	--	--	--
HKR-05*, HKR-05C*	25 / 28	30 / 30	--	--	4.75 / 16,200
HKR-08*, HKR-08C*	38 / 40	40 / 40	--	--	7.0 / 23,800
HKR-10*, HKR-10C*	49 / 56	60 / 60	--	--	9.5 / 32,400
HKR-15*, HKR-15C*	49 / 56	60 / 60	22 / 25	30 / 30	14.25 / 48,600
HKR-20*, HKR-20C*	49 / 56	60 / 60	43 / 49	60 / 60	19.5 / 66,500
<b>GPH1360M21AA</b>	7.6 / 7.6	--	--	--	--
HKR-05*, HKR-05C*	29 / 30	30 / 30	--	--	4.75 / 16,200
HKR-08*, HKR-08C*	39 / 40	40 / 40	--	--	7.0 / 23,800
HKR-10*, HKR-10C*	51 / 58	60 / 60	--	--	9.5 / 32,400
HKR-15*, HKR-15C*	51 / 58	60 / 60	22 / 25	30 / 30	14.25 / 48,600
HKR-20*, HKR-20C*	51 / 58	60 / 60	43 / 49	60 / 60	19.5 / 66,500
<b>GPH1524M41AA</b>	4.1 / 4.1	--	--	--	--
HKR-05*, HKR-05C*	24 / 27	30 / 30	--	--	4.75 / 16,200
HKR-08*, HKR-08C*	34 / 39	40 / 40	--	--	7.0 / 23,800
HKR-10*, HKR-10C*	45 / 52	60 / 60	--	--	9.5 / 32,400
<b>GPH1536M41AA</b>	4.1 / 4.1	--	--	--	--
HKR-05*, HKR-05C*	24 / 27	30 / 30	--	--	4.75 / 16,200
HKR-08*, HKR-08C*	34 / 39	40 / 40	--	--	7.0 / 23,800
HKR-10*, HKR-10C*	45 / 52	60 / 60	--	--	9.5 / 32,400
HKR-15*, HKR-15C*	45 / 52	60 / 60	22 / 25	30 / 30	14.25 / 48,600
<b>GPH1548M41AA</b>	5.8 / 5.8	--	--	--	--
HKR-05*, HKR-05C*	25 / 28	30 / 30	--	--	4.75 / 16,200
HKR-08*, HKR-08C*	38 / 40	40 / 40	--	--	7.0 / 23,800
HKR-10*, HKR-10C*	49 / 56	60 / 60	--	--	9.5 / 32,400
HKR-15*, HKR-15C*	49 / 56	60 / 60	22 / 25	30 / 30	14.25 / 48,600
HKR-20*, HKR-20C*	49 / 56	60 / 60	43 / 49	60 / 60	19.5 / 66,500
<b>GPH1560M41AA</b>	7.6 / 7.6	--	--	--	--
HKR-05*, HKR-05C*	29 / 30	30 / 30	--	--	4.75 / 16,200
HKR-08*, HKR-08C*	39 / 40	40 / 40	--	--	7.0 / 23,800
HKR-10*, HKR-10C*	51 / 58	60 / 60	--	--	9.5 / 32,400
HKR-15*, HKR-15C*	51 / 58	60 / 60	22 / 25	30 / 30	14.25 / 48,600
HKR-20*, HKR-20C*	51 / 58	60 / 60	43 / 49	60 / 60	19.5 / 66,500

See Notes on previous page.

## ELECTRICAL DATA FOR GPC-H “M” SERIES THREE-PHASE PACKAGED UNIT (BLOWER ONLY, HEAT MODE)

MODEL AND HEAT KIT USAGE	CIRCUIT #1		CIRCUIT #2		ACTUAL KW / BTU@ 240V
	MCA <sup>1</sup>	MOP <sup>2</sup>	MCA <sup>1</sup>	MOP <sup>2</sup>	
<b>GPC1336M23AA</b>	1.9 / 1.9	--	--	--	--
^HKR3-15*	39 / 45	60 / 60	--	--	15.0 / 55,100
^HKR3-20*	51 / 55	60 / 60	--	--	19.5 / 66,500
<b>GPC1348M23AA</b>	5.8 / 5.8	--	--	--	--
^HKR3-15*	39 / 45	60 / 60	--	--	15.0 / 55,100
^HKR3-20*	51 / 55	60 / 60	--	--	19.5 / 66,500
<b>GPC1360M23AA</b>	7.6 / 7.6	--	--	--	--
^HKR3-15*	39 / 45	60 / 60	--	--	15.0 / 55,100
^HKR3-20*	51 / 55	60 / 60	--	--	19.5 / 66,500

<b>GPH1336M23AA</b>	1.9 / 1.9	--	--	--	--
^HKR3-15*	39 / 45	60 / 60	--	--	15.0 / 55,100
^HKR3-20*	51 / 55	60 / 60	--	--	19.5 / 66,500
<b>GPH1348M23AA</b>	5.8 / 5.8	--	--	--	--
^HKR3-15*	39 / 45	60 / 60	--	--	15.0 / 55,100
^HKR3-20*	51 / 55	60 / 60	--	--	19.5 / 66,500
<b>GPH1360M23AA</b>	7.6 / 7.6	--	--	--	--
^HKR3-15*	39 / 45	60 / 60	--	--	15.0 / 55,100
^HKR3-20*	51 / 55	60 / 60	--	--	19.5 / 66,500

MODEL AND HEAT KIT USAGE	CIRCUIT #1		CIRCUIT #2		ACTUAL KW / BTU@ 240V
	MCA <sup>1</sup>	MOP <sup>2</sup>	MCA <sup>1</sup>	MOP <sup>2</sup>	
<b>GPC1336M24AA</b>	1.2 / 1.2	--	--	--	--
^HKR4-15*	23	30	--	--	15.0 / 55,100
^HKR4-20*	30	30	--	--	19.5 / 66,500
<b>GPC1348M24AA</b>	2.9 / 2.9**	--	--	--	--
^HKR4-15*	23	30	--	--	15.0 / 55,100
^HKR4-20*	30	30	--	--	19.5 / 66,500
<b>GPC1360M24AA</b>	3.8 / 3.8**	--	--	--	--
^HKR4-15*	23	30	--	--	15.0 / 55,100
^HKR4-20*	30	30	--	--	19.5 / 66,500

<b>GPH1336M24AA</b>	1.2 / 1.2	--	--	--	--
^HKR4-15*	23	30	--	--	15.0 / 55,100
^HKR4-20*	30	30	--	--	19.5 / 66,500
<b>GPH1348M24AA</b>	2.9 / 2.9	--	--	--	--
^HKR4-15*	23	30	--	--	15.0 / 55,100
^HKR4-20*	30	30	--	--	19.5 / 66,500
<b>GPH1360M24AA</b>	3.8 / 3.8	--	--	--	--
^HKR4-15*	23	30	--	--	15.0 / 55,100
^HKR4-20*	30	30	--	--	19.5 / 66,500

<sup>1</sup> Minimum Circuit Ampacity @ 208 / 240 V

<sup>2</sup> Maximum Overcurrent Protection device @ 208 / 240 V

<sup>3</sup> Minimum Circuit Ampacity @ 460 V

<sup>4</sup> Maximum Overcurrent Protection device @ 460 V

\* Revision level that may or may not be designated

C Circuit Breaker option

^ Heat Kit requires three-phase power supply

Note: All HKR ampacities noted above include unit motor amps. Excluding three-phase models



Goodman Manufacturing Company, L.P., reserves the right to discontinue, or change at any time, specifications or designs without notice or without incurring obligations. © 2010 • Goodman Manufacturing Company, L.P. • Houston, Texas • Printed in the USA.

